

Case study

Year of Project: 2015

Services undertaken

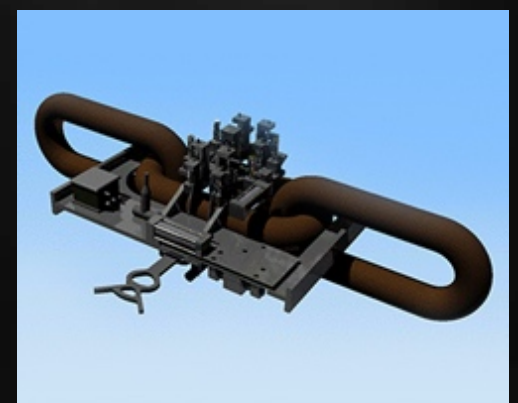
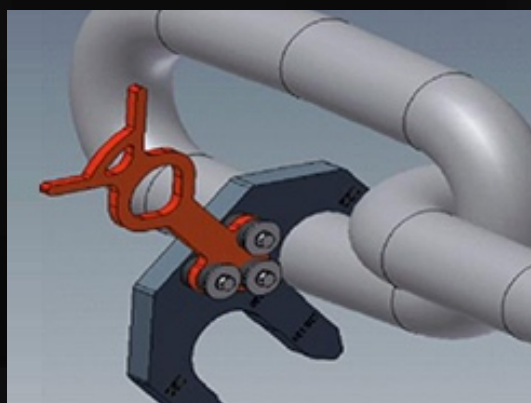
- Concept design
- FEA & calculations
- Project Management
- Installation and operational procedures
- Designed and Manufactured within 9 days
- Onshore trials



SengS was contracted to design and manufacture mooring chain inspection tools. Three tools were designed; go-no-go gauges, chain measurement tool and scanning measurement tool. In addition, to optimise the WROV a subsea basket was designed & manufactured and bolted to the frame of the ROV to allow the tools to be stored and changed out subsea.

Client

Dsv Service Company



Contact us

Website: www.sengs.org.uk

Email: info@sengs.org.uk

Telephone: +44(0)1358 720854

